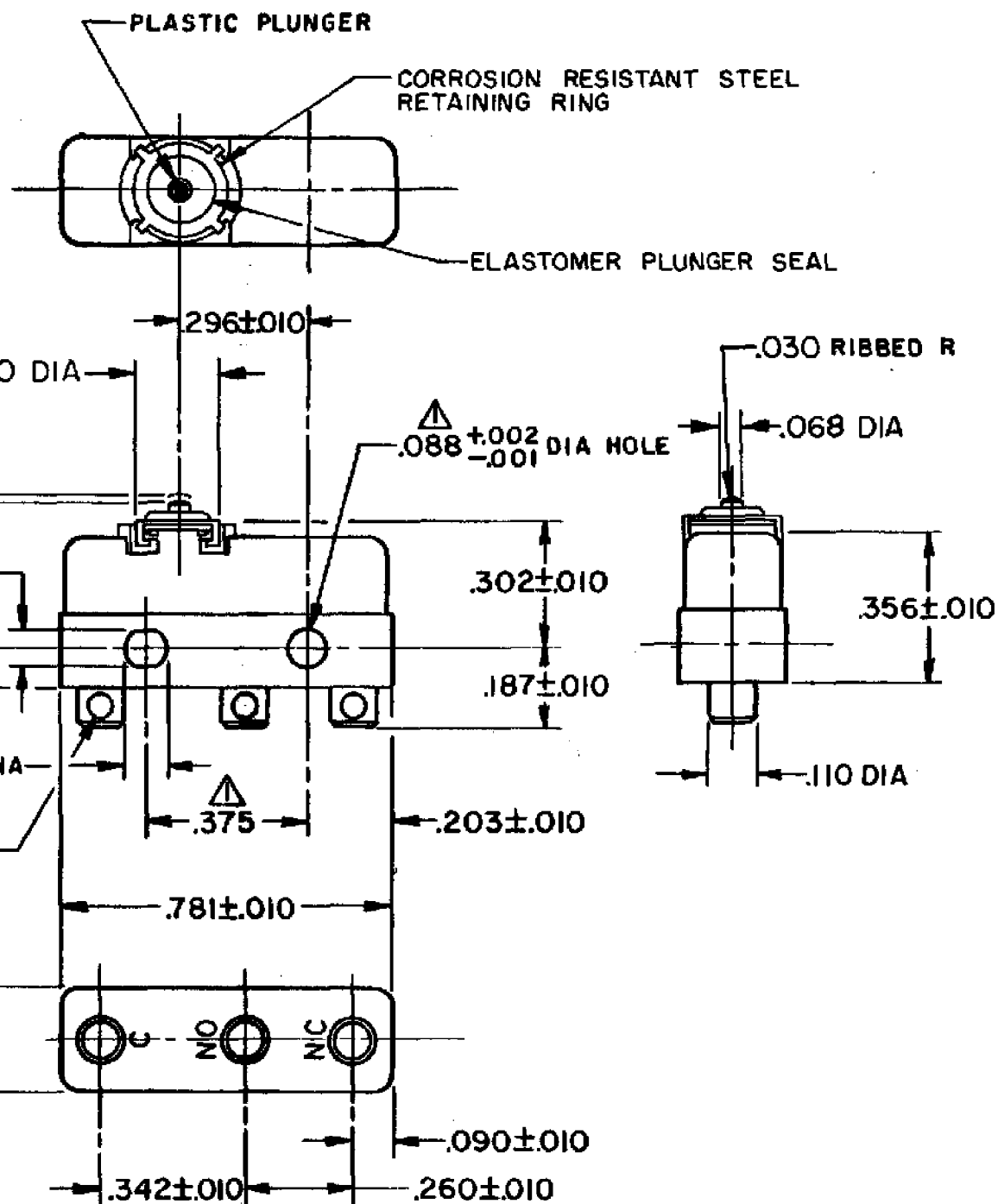


HONEYWELL PART NUMBER
411SM1
PRODUCT CODE TZG0011

REV	DOCUMENT	CHANGED BY	CHECK
8	0038115	VS 28APR08	BLR



NOTE -

- 1 - MOUNTING HOLES WILL ACCEPT PINS OR SCREWS OF .087 MAX DIA ON .375±.002 CENTERS
- 2 - TERMINALS ARE PLATED FOR SOLDERING
- 3 - SWITCH WILL WITHSTAND TEMPERATURES FROM -40° TO +250° F
- 4 - TEMPERATURE EXTREMES MAY CAUSE FORCE CHARACTERISTICS TO CHANGE. STATED CHARACTERISTICS ARE FOR ROOM TEMPERATURE
- 5 - SEAL CONSTRUCTION PROVIDES SPLASH AND DUST RESISTANCE

RELEASE NO.	PR - 1539 - T
REPLACES	-

CHARACTERISTICS	4
OPERATING FORCE	3 - 7 1/2 OZ
RELEASE FORCE	1 OZ MIN
DIFFERENTIAL TRAVEL	.004 MAX
OVERTRAVEL	.005 MIN

ELECTRICAL DATA		
CONTACT ARRANGEMENT SPDT		
30 VOLTS DC RATING		
	SEA LEVEL	50,000 FT
INDUCTIVE	3 AMP	2.5 AMP
RESISTIVE	5 AMP	5 AMP
MAXIMUM INRUSH 24 AMP		
APPROVALS	KEMA, CE	5A, 250V ~ T85 1E4
	UL, CSA	5A, 250 VAC

DESIGN UNITS: INCH
TOLERANCES UNLESS NOTED:
NO PLACE X ±
ONE PLACE .X ±
TWO PLACE .XX ±
THREE PLACE .XXX ±
FOUR PLACE .XXXX ±
ANGLES ±
0.030
0.015
0.005
THIRD ANGLE PROJECTION

DRAWN	VK	04 DEC 07
CHECK	RJ	04 DEC 07
THIS DRAWING COVERS A PROPRIETARY ITEM AND IS THE PROPERTY OF HONEYWELL. THIS DRAWING IS NOT TO BE COPIED OR USED WITHOUT THE PERMISSION OF HONEYWELL.		
INTERPRET PER ANSI Y14.5M-1982 OTHER HONEYWELL ENGINEERING STANDARDS MAY APPLY		
RASTER		

Honeywell			
TITLE SWITCH - BASIC			
SIZE	TYPE	DRAWING NAME	REV
B	I	411SM1	8
SCALE	-	WEIGHT .006 LB MAX	SHEET 1 OF 1